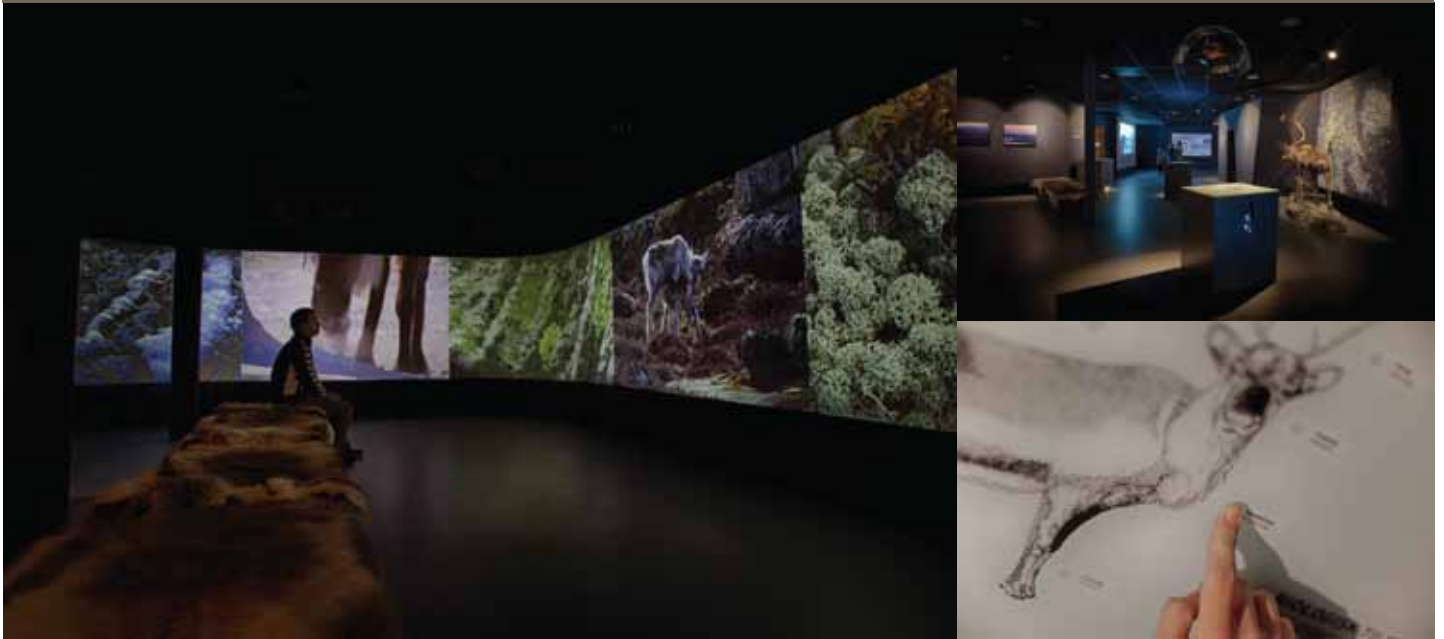


HARDANGERVIDDA NATIONAL PARK CENTRE



The Hardangervidda national park centre at Skinnarbu is located at the gateway of one of Europe's largest national parks. The centre is located by road (Rv 37) between Rjukan and Rauland.

Our international awarded nature and reindeer exhibition contains 22 interactive installations as well as a movie theatre. Follow the migration of the wild reindeer in prehistoric times and see different tools made by man more than 17 000 years ago in the south of France (Dordogne).



See pictures and videos from camera attached to the reindeer Bella for one year (2012) following her on the Hardangervidda plateau. Watch films made by the Norwegian photographer Arne Nævrå.

We have a digital library containing information on plants, animals and related issues (mainly on species from Hardangervidda). The entire exhibiton is in English and Norwegian. Our cafe has the most spectacular view over Hardangervidda. There is many options for hiking, fishing and boattrips into the national park.



Cafe Panorama serves lunch and snacks every day during our regular opening hours.

This is the place to relax and enjoy the spectacular view.



HARDANGERVIDDA NATIONAL PARK CENTRE
Skinnarbu - NO 3660 Rjukan
Ståle Rue - 97074300 - stale@hardangervidda.com
www.hardangervidda.com
www.facebook.com/hardangerviddanasjonalparksenter
(Hardangervidda nasjonalparksenter, Skinnarbu)

OPENING HOURS

Visit hardangervidda.com or [facebook.com/hardangerviddanasjonalparksenter](https://www.facebook.com/hardangerviddanasjonalparksenter)

June 10 - Aug 31: 10.00 - 18.00 (Mon-Sun)

Tickets: adults: NOK 70,- /
children u. 16yrs : NOK 30,-



